

Plug-In Anchor/Fork Anchor Fasteners

without support structure

Drilling - Grouting - Insulating

The KEIL plug-in anchor and the KEIL fork anchor in conjunction with the KEIL undercut anchor make it possible to attach natural stone panels without a support structure.

The support bolts are attached to the panel back with the undercut anchor. The holes in the substrate to which the panels are fitted are filled with a permissible mortar.

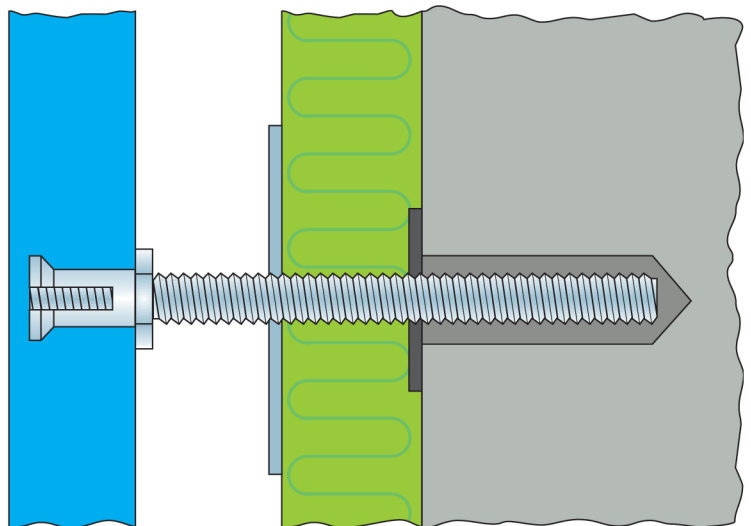
The threaded rods on the facade panel are fitted into the filled holes. The facade panel is aligned and fixed. After the correct setting time, depending on temperature, has passed, a safe, stress-free bond has been produced.

- With/without insulation
- Subsequent replacement of individual panels possible
- High safety due to optimum load distribution with both systems

Plug-in anchor

The KEIL plug-in anchor facilitates the tight axial connection of undercut anchor and threaded bolt.

It is used where facade panels need not be removed again after fixing, e.g. to replace damaged panels, in precast reinforced concrete elements, for internal fittings.



Fork anchor

The KEIL fork anchor facilitates the safe, detachable connection of natural stone facade panels and the substrate.

It is used, for example, when the panel has to be removed again, for example to fit insulation or to check the anchoring.

Fork bolt and undercut anchor are not directly joined.

The fork plate between them makes disassembly of the facade panel possible.

