



TILE EZE INC.



P.O. Box 111390
Naples, FL 34108-0124
Phone/Toll Free: (800) 476-3737
Email: info@tile-eze.com
www.keilanchor.com

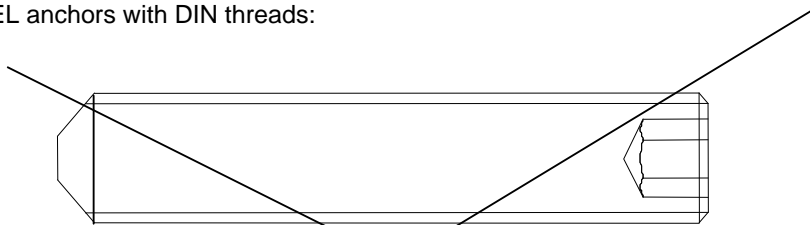
Due to the corresponding references in the authorizations KEIL is asked by the DIBt to distribute the HS-anchors only complete with the belonging thread-parts.

The condition of the DIBt is mainly founded on the following facts:

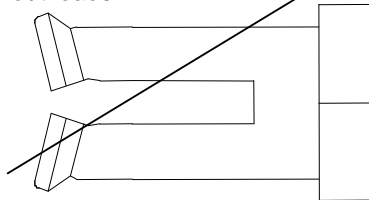
1.) When assembling screws and anchors by KEIL it is guaranteed that the screw in its end position is flush mounted with the foot of the anchor. (Please see drawing)
Please take into consideration when ordering that the indication of the clamping thickness is absolutely necessary to be able to determine the length of the screws.

2.) **KEIL thread parts are no DIN parts!!** Production is leaned on DIN rules but the thread parts are special models which are supplied only by **KEIL**. The following drawings explain why only **KEIL-System Parts** may be used.

Assembly of KEIL anchors with DIN threads:

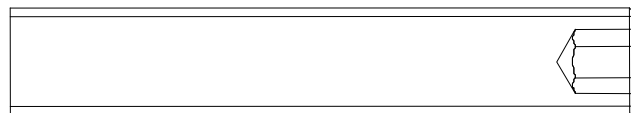


Under load the side angles collapse in the area of the screw lampholder. This can lead to a main decline of the pull-out loads.

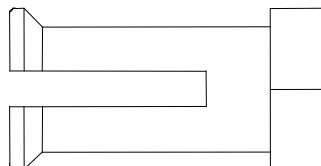


wrong !

Now the **right** representation of the **mounting with KEIL-System Parts**



The anchor side angles are supported on the total length. A collapsing of the side angles is not possible. It is guaranteed that the determined pull-out loads are reached completely.

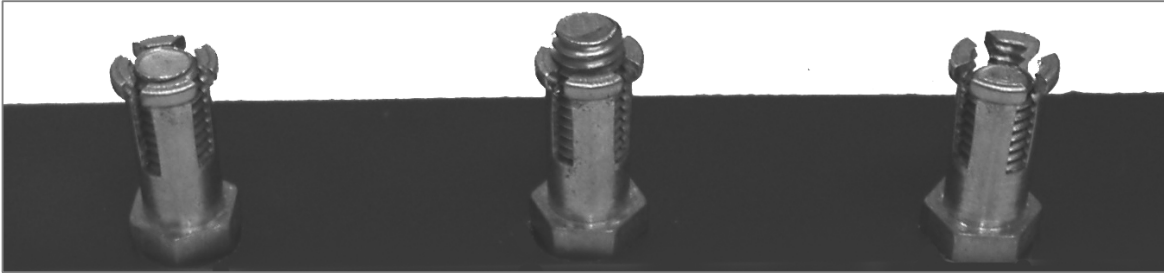


right !

How to calculate the length of the bolt

Example

14.5mm Anchor with 3mm Thick Clip



Correct	<i>Bolt too long</i>	<i>Bolt too short</i>
14.5 mm Anchor 20.5 mm Bolt	14.5 mm Anchor 23.5 mm Bolt	14.5 mm Anchor 19 mm Bolt